



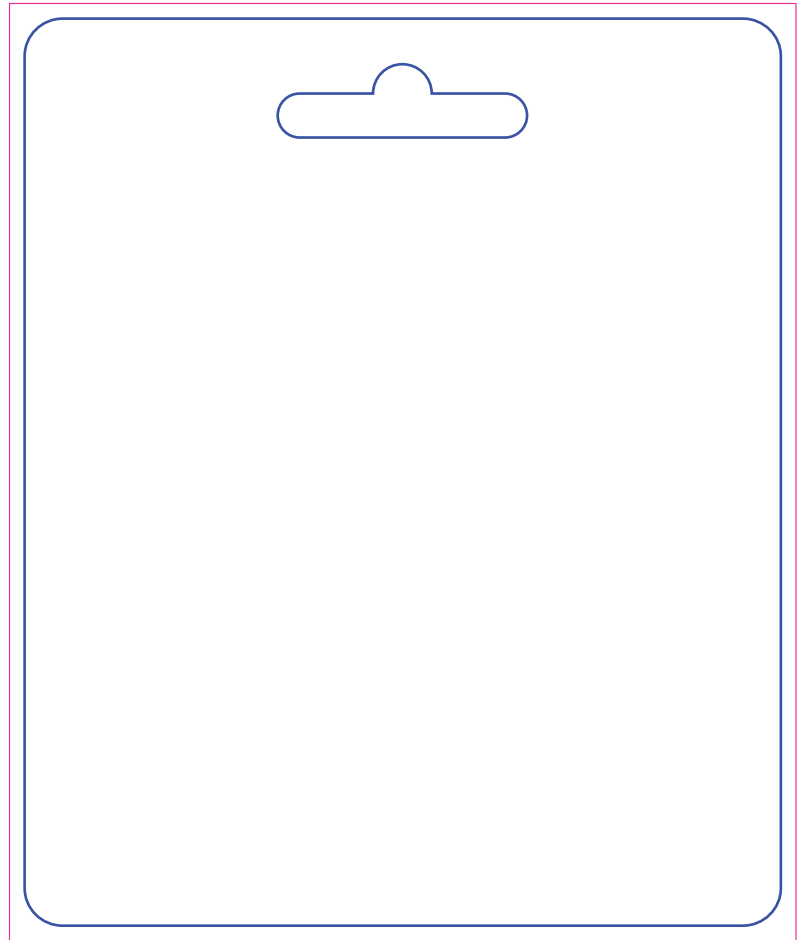
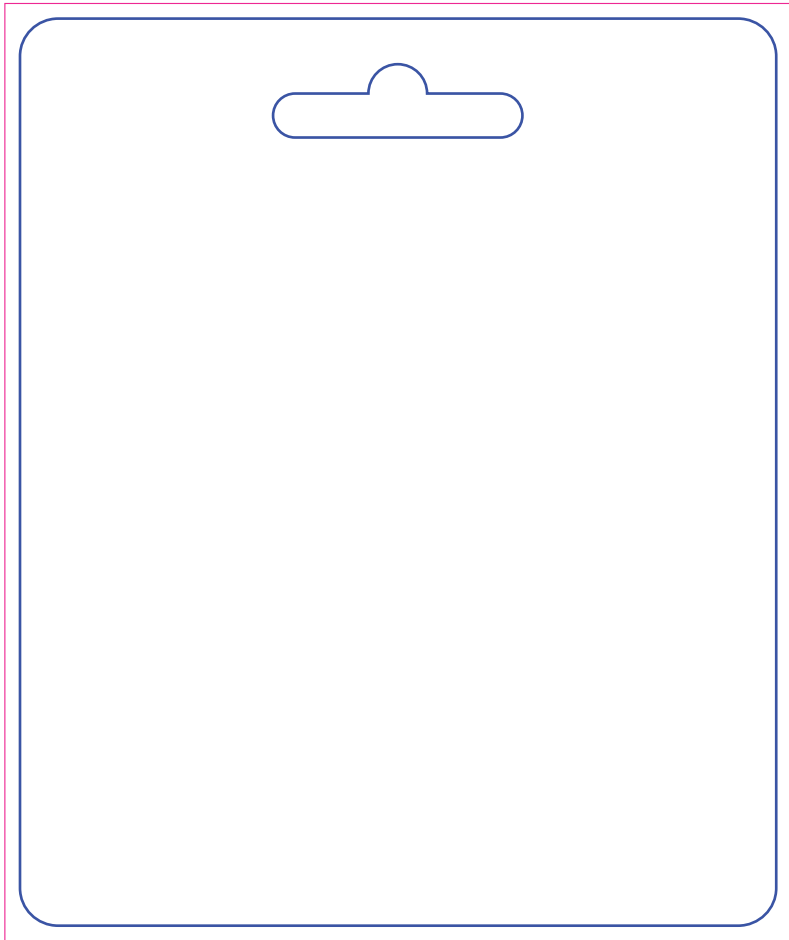
COLOR KEY:

- ■ ■ ■ Safe Zone - If your art or text passes the green line, it may get clipped off.
- Trim Line - If your art passes the blue line, it should also extend to the magenta line.
- For Placement Only (FPO)

Front

fold here to view card placement.

Back



fold here to view card placement.

COMMON PROBLEMS WITH ARTWORK:

- Fonts are not outlined.
- Type has been modified using the style palette (i.e. bold or italic) rather than using the appropriate typeface from font list.
- Graphics are low resolution; raster graphics should be at least 300dpi
- Graphics are missing; not embedded or not supplied with artwork.
- Artwork color is supplied in RGB and not CMYK.
- Graphic does not meet the 1/8" bleed requirements.
- Supplying only the final Photoshop file instead of also including the original layered Photoshop file.

PRODUCTION SPECIFICATIONS AND PROOFS:

- Include magnetic stripes and variable data in your design in the color magenta, and on a separate layer. Also, please include the label "FPO" (for placement only). All FPO magnetic stripes, bar codes and other variable data will be removed prior to production.
- Carefully check spelling, layout, and specifications. The proof indicates the exact spelling and location of copy, magnetic stripes, hole punching, sequential numbering, signature panels, and or other options to your card.
- Any text or art that is getting extra options such as foil stamping, crystal raised ink, etc. must be in vector format.
- Every effort will be made to match a PMS color. However, there may be a slight variation in color due to overprinting and/or the application of certain print options.
- Any changes or alterations in your design or copy will require a new proof and will also affect your ship date. Your ship date is estimated after you approve of your final artwork.

ACCEPTED SOFTWARE:

We accept artwork from the following programs:

- Adobe Illustrator CS
- Adobe Photoshop CS
- Adobe InDesign CS
- Adobe PDF - High Resolution

We cannot accept other software files, including Microsoft Word, Microsoft Publisher, and Microsoft Powerpoint.